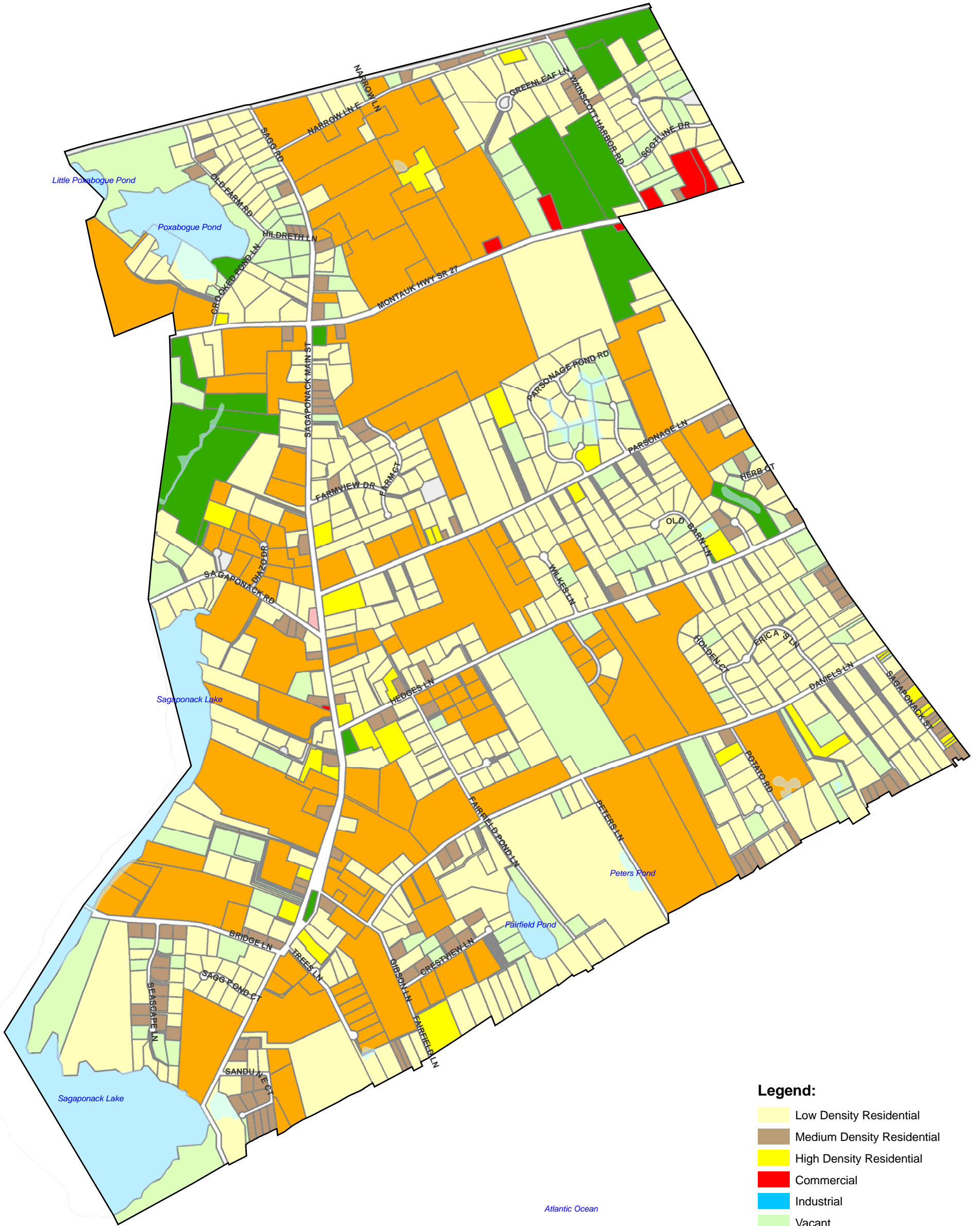


Map 2

Existing Land Use for the Incorporated Village of Sagaponack Town of Southampton Suffolk County, New York



Legend:

- Low Density Residential
- Medium Density Residential
- High Density Residential
- Commercial
- Industrial
- Vacant
- Institutional
- Recreation and Open Space
- Agriculture
- Transportation
- Municipal
- Surface Waters
- No Data

Suffolk County Real Property Tax Service
 COPYRIGHT 1997, COUNTY OF SUFFOLK, N.Y.
 Real Property Taxmap parcel line work used with permission of
 Suffolk County Real Property Tax Service Agency (R.P.T.S.A.)
 This Cartographic rendering is a DRAFT MAP excepted from
 the provisions of the Freedom Of Information Law (F.O.I.L.)
 [Public Officers Law Article 6 Section 84-90] by section 87.2.g
 in that:
 1. The data displayed is an interagency or intra agency draft
 produced for the purpose of identifying and correcting data.
 2. It is not a final agency determination.
 3. It is not a statistical or factual compilation of data.
 4. In some cases correct data has been left out and questionable
 or inaccurate data has been exaggerated to help identify errors.
 In short this is a DRAFT MAP produced in cooperation with the
 Data sources listed in an effort to aid in the correction of data
 and is not held out as being complete or accurate in any way.

Prepared For:
 The Incorporated Village of Sagaponack

Prepared By:
 Town of Southampton
 Dept. of Geographic Information Systems
 116 Hampton Rd
 Southampton, NY 11968

March 13, 2007
 Map ID 1360

* SOURCE: Town of Southampton
 Tax and Assessment database & Geographic
 Information System